

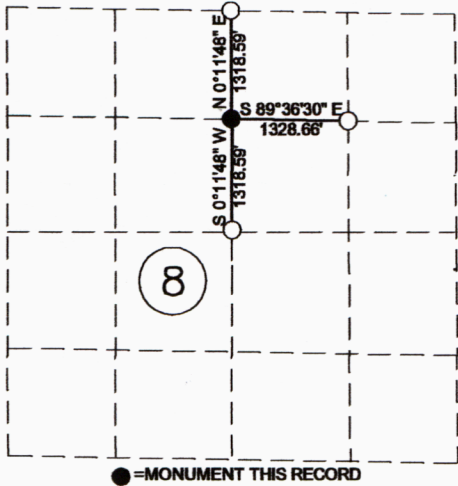
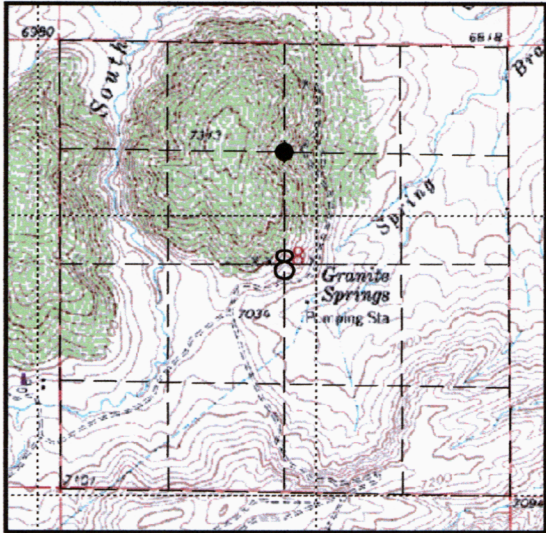
State of Wyoming Corner Record

(In compliance with the CORNER PERPETUATION AND FILING ACT, Wyoming Statutes, 1997 Section 33-29-140 et. seq., and the Rules and Regulations of the Board of Professional Engineers and Professional Land Surveyors)

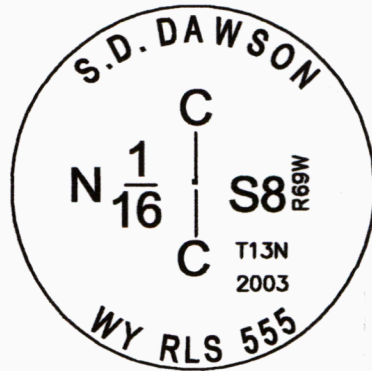
Reverse side of this form may be used if more space is needed.

Record of original survey and citation of source of historical information (if corner is lost or obliterated). Description of corner monumentation evidence found and/or monument and accessories established to perpetuate the location of this corner. Sketch of relative location of monument, accessories, and reference points with course and distance to adjacent corner(s) (if determined in this survey). Method and rationale for reestablishment of lost or obliterated corner.

RECORD: None
 FOUND: Nothing
 SET: 2-1/2" Aluminum Cap on a 3/4"x30" Rebar inscribed as shown hereon.



Monument Location



Monument Inscription

Date of Field Work: 8-14-2003 Office Reference: AMARMA0301.00

Cross Index Plat

Firm/Agency, Address

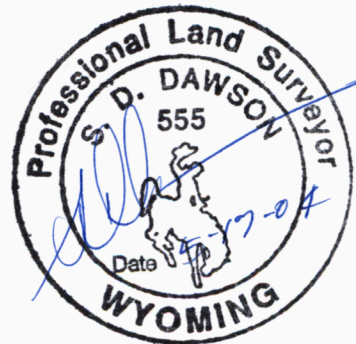
This corner record was prepared by me or under my direction and supervision.

	1	2	3	4	5	6	7	8	9	10	11	12	13	14	15	16	17	18	19	20	21	22	23	24	25		
A																											B
B																											C
C		6		5		4		3		2		1															D
D																											E
E																											F
F																											G
G																											H
H																											I
I																											J
J																											K
K																											L
L																											M
M																											N
N																											O
O																											P
P																											Q
Q																											R
R																											S
S																											T
T																											U
U																											V
V																											W
W																											X
X																											Y
Y																											Z
Z																											

SEH Inc.
 7000 Yellowtail Rd
 Cheyenne, WY 82001

Telephone Number: 307-633-6440

SEAL & SIGNATURE



Corner Name CN 1/16 Section 8 Section 8, T 13 N, R 69 W, 6th P.M. Cross-Index No.: F-7
 County: Laramie Wyoming
 SBRPEPLS/PLSW: March 1994; PLSW January 1998